



**LAB
EXPERT**



**YOUR SUCCESS
IS OUR TASK**



QR CODE
CONTACT

- 📍 18, 7th Fl. Sricharoenchai Building, Tiwanon Road, Talat Khwan, Mueang, Nonthaburi 11000 Thailand.
- ☎ Phone: (662)968-7676-7 Fax: (662)968-9190
- ✉ E-Mail: Sales_instrument@labexpert.co.th
- 🌐 Website: Labexpert.co.th



APP DEVELOPMENT

ANALYTICS **ENGINEERING** **SOFTWARE**

MARKET ENVIRONMENT **CODING**

WE PROVIDE COMPLETE
CUSTOMIZED SOFTWARE SOLUTION TO MEET YOUR BUSINESS WORK FLOW.

PRODUCTS LIST PAGE

Water Analysis	2 - 3
Analytical Instruments	4 - 8
Life Science	9 - 11
Consumable	12 - 13
Basic Equipment Laboratory	14

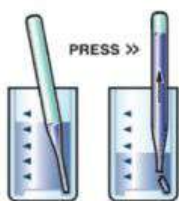


ANALYTICAL METHODS

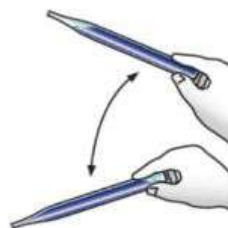
- | | |
|-------------------|-----------------|
| Alkalinity | Iron |
| Aluminum | Manganese |
| Ammonia | MBT |
| Bromine | Molybdate |
| Calcium | Nitrate |
| Carbon Dioxide | Nitrite |
| COD | Oxygen |
| Chloride | Ozone |
| Chlorine | Peracetic acid |
| Iron in brine | Persulfate |
| Chlorine Dioxide | Permanganate |
| Chromate | pH |
| Conductivity | Phenols |
| Copper | Phosphate |
| Cyanide | QACs |
| DEHA | Silica |
| Detergents | Sulfate |
| Filming Amine | Sulfide |
| Formaldehyde | Sulfite |
| Glutaraldehyde | Sulfite in Wine |
| Glycol | Thiosulfate |
| Hardness | TDS |
| Hydrazine | TPH |
| Hydrogen peroxide | Turbidity |
| Hypochlorite | Zinc |

INDUSTRIES APPLICATIONS

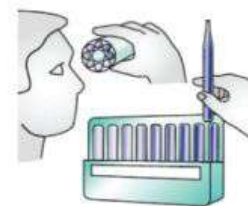
- Power generation
- Environmental / Education
- Petro / Chemical Industry
- Water / Wastewater
- Water Treatment
- Lab / Clinic / Medical
- Pulp and Paper
- Food and Beverage
- Mining and Manufacturing



STEP 1



STEP 2



STEP 3



AQUALYTIC® Water Analysis

Determination of Boiler, Cooling
and Industrial Process Water



Test kits, MINIKIT and CHECKIT® Comparator



Spectrophotometer, COD and BOD Measurement



Cabinets, Hand-Held Meter and Turbidity Measurement



AAS



FT-IR



ICP-OES



ICP-MS



GC



GC-MS



ED-XRF



WD-XRF



XRD



XRD-D2



Optical Emission Spectrometer



Handheld-XRF



Laboratory Analytical
and Measuring Equipments



Capillary Electrophoresis



Mercury Analyzer

JAI Japan Analytical Industry Co., Ltd.



Curie Point Injector



Outgas Collectors



Hybrid Pyrolyzer for GC/MS



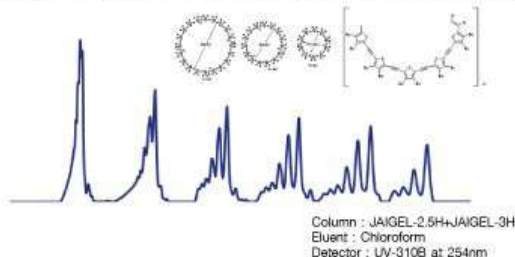
JAI Japan Analytical Industry Co., Ltd.

Recycling Preparative HPLC is...

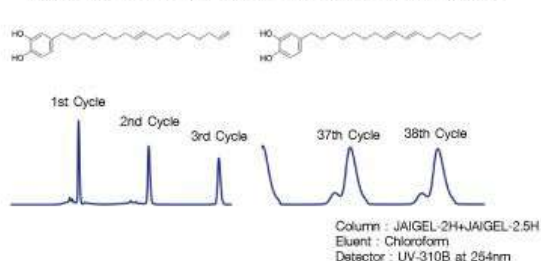
For preparative HPLC, the column length is one of the keys to improve separation. However, there is a limit as to the length due to back pressure problem. To solve this, recycling technique can be applied. After initially passing through the columns, the sample is recycled by returning to the same columns and the operation is repeated until baseline separation is achieved. With recycling technique, the chromatographic resolution increases by the square root of number of passes through the column and there is no solvent consumption. Recycling conserves solvent use and reduces the investment in columns. This is the method you've been looking for!



[Separation Ex.1] With GPC + Recycle, Macrocylic Oligothiopenes

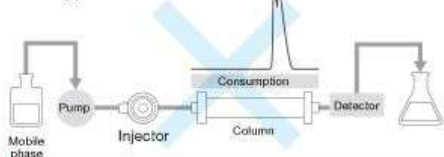


[Separation Ex.2] With GPC + Recycle, Position Isomer



When using a short column

Co-eluting peaks



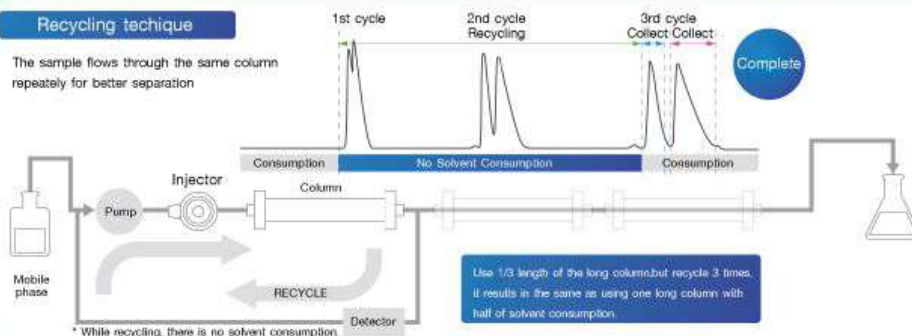
When using a long column

Not physically possible due to high back pressure. Even if it is possible, this can be too expensive.



Recycling technique

The sample flows through the same column repeatedly for better separation



Advantages

- 1 Achieves the same separation as using a longer column.
- 2 Reduces expense of purchasing columns.
- 3 Stops consuming solvent-high cost performance and good for the environment.



BIOMETRICS TECHNOLOGIES ANALYTICAL SOLUTION



miniLC-80

The first ever compact HPLC
Maximum Pressure: 40 MPa (400 bar or 5800 psi)
Detector: UV-VIS (180-680 nm)

Moisture Analyzer

Capacity: 60g and 110g
Readability: 0.001g / 0.01%
Heat Source: Halogen lamp
Temperature Range: 40°C - 199°C



UV 900VTD (Color Touchscreen)

Double Beam Spectrophotometer
Wavelength Range: 190-110 nm
Spectral Bandwidth: 0.5, 1, 2, 4, 5 nm
Detector : 2 Silicon Photodiodes



Comfort-S

Portable XRF Sulfur in Oil Analyzer
Excitation Source: 4 Watts High efficiency micro tube
Detector: High Resolution SDD
Detection Range: Low sulfur 5-100 ppm

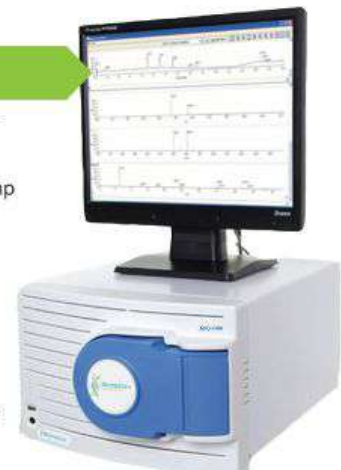


LAVAwave

Microwave Digestion
Operation: 7" Touch Screen
Real-time monitoring: for temperature and pressure
Vessel Volume: 100 ml
Microwave Power: 0-1000W (adjustable)

MiQ-1400

Smallest Mass Spectrometer
MS type: Single Quadrupole
Mass range: 50-1400 m/z
Built-in PC and Vacuum pump





BIOMETRICS TECHNOLOGIES LIFE SCIENCE SOLUTION



BioBead Homogenizer

Cooling Function
Shaking and Centrifuging Function



BioSpin High Speed Centrifuge

Max. rotor capacity : 100mlx4
Speed up to 16,500rpm (23.669xg)
HC-165R Refrigerated Centrifuge has an additional feature state of the cooling function (-20 to 40°C)



OneDrop Touch Pro

Micro-volume Spectrophotometer
7" Touch screen
Both function for small drop & cuvette
Full Wavelength (185-910 nm) scanning
Detection Concentration: 2-27,500 ng/μl dsDNA



BioGene 96 TOUCH

Gradient PCR Thermal Cycler
7-inch color touch screen
Portable block design is easy for sample blocks interchange without maintenance
96-well+77-well reaction module as standard block



BioPlate Reader

Microplate Reader
Shaking and incubation

LIGHTGene 60G

Real-Time PCR
Sample capacity : 96 wells block
Max. Heating Rate: 6°C /sec
Max. Cooling Rate: 5°C /sec
Fluorescence Dyes up to 6 channels



IBLED

Blue light source is good for 30,000 hours
No risk of UV damage for high quality work experience



Novel Juice

Non-Carcinogen
DNA Stain Dye



Electrophoresis System



The miniPCR

Discovery System™

The complete biotechnology toolkit for your lab or classroom

- Midori Green
- miniPCR
- BuleGel
- Micropipette
- Agarose
- Tablet Android System (Optinal)



miniPCR®

The PCR Machine for everyone, everywhere

- ✓ Superior PCR performance
- ✓ Interactive App
- ✓ Portable and perfect for every bence
- ✓ Designed, engineered, and built in USA



bluegel™ by miniPCR

Intereated DNA electrophoresis and visualization

- ✓ Intereated electrophoresis and illuminator
- ✓ Fast results using up to 10x less reagents
- ✓ Visualize DNA as it seoarated
- ✓ No Ethidium Bromide, UV, or high voltage





- Alternative to Ethidium Bromide
- Proven Safety
- Excellent signal



Non-Carcinogenic DNA stains for nucleic acid staining

MIDORI^{GREEN} Dyes



Extraction Kits and Enzymes



Electrophoresis System



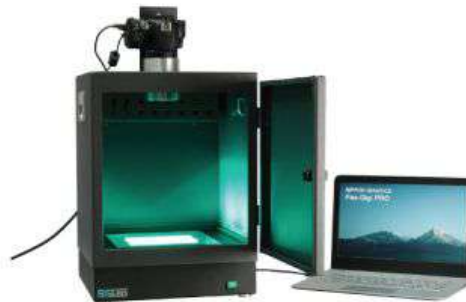
Lab Instruments

Gel Documentation Systems

BGLED GelPicBox



FAS Digi



FAS V



“I have just used a Blue / Green LED illuminator with MIDORI^{Green} Direct and it never fails to impress!”

Dr. Jean Emly, Founder of Geneflow Ltd., England

RESTEK



Sample Preparation

- Q-sep™ QueChERS Extraction Salts
- Q-sep™ 3000 Centrifuge and Accessories
- Resprep® 6-Port Disk Manifold Lid and Accessories
- Resprep® Sample Delivery System
- Amber Sample Collection Bottles for ASE® 300/100 Systems
- Tubing Assembly for ASE® 200/300 Systems
- Cell Organizer for ASE® Parts
- Carrier Basket for ASE® Cells
- Cell Cleaning Brushes for ASE® 100/200/300 Cells

Glassware

- Kuderna-Danish Evaporator Concentrator
- Concentrator Tube
- Soxhlet Extraction Apparatus
- Erlenmeyer Flasks (Standard & Iodine Style)
- Volumetric Flasks, Class A, St Stopper (Clear & Amber)
- Micro Volumetric Flask, Class A, ST Stopper
- Auto-Zero Burets with Teflon® Stopcock and Reservoir, Class A
- Squeeze-O-Matic (S-O-M) Buret with Poly Bottle and Teflon® Plug
- Separatory Funnels, Squibb Type with Teflon® Stopcock
- Midget Gas Impingers
- Automatic, Repeating Pipets
- ST Hollow Stopper



Air Monitoring

- Ashroft® Gauge Connector to Canister Valve
- Passive Air Sampling Kits-Grab Sampling
- Passive Air Sampling Kits-Soil Gas Sampling
- Dual Canister Sampling Manifold
- TO-Clean Canister Cleansing System
- Air Canister Tripod
- Mini-Can Accessories (Sampling Belt, Personal Sample Inlet, Mini-Can Stand)
- Sample Cylinders, Stainless Steel (High Pressure & Ultra-High Pressure)
- Sample Cylinder Valves
- Rupture Disc Tee
- Metering Control Valves



GC Columns

Capillary

- Rtx® -DHA
- Rtx® -Mineral Oil
- Rtx® -Volatile Amine
- Rxi® -1HT
- Rxi® -17SII MS
- Rxi® -624SII MS
- MXT® -1HT SimDist
- 0.15 mm ID Column Dimensions (Rxi-1ms, Rxi-6SII MS, Rxi-17SII MS, Stabilwax, Rtx 200)

PLOT

- Rti® -Alumina BOND/CFC
- MXT® -Alumina BOND/N.250,
- MXT® -Q-BOND
- MXT® -S-BOND
- 0.25 mm ID PLOT Columns

Packed

- 0.53 mm ID Micropacked Columns



GC Accessories

- Sky™ Inlet Liners
- Merlin Microseal Adapter Kits
- PTV Inlet Adapter Kits
- ATAS LINEX DMI Liner and Accessories
- Restek ProFlow 6000 Electronic Flowmeter
- High-Temp O-Rings for Agilent GCs
- Swagelok® Valves(Toggle, Ball, Plug, Straight Metering)
- Nitrogen Generators for LC/MS
- Flip Seal (Reversible) Dual Vespal® Ring Inlet Seals
- Swagelok® VCO® O-Ring Face Seal Fittings
- Column Hanger for Agilent GCs



HPLC Columns

- Ultra II® HPLC Columns (C18, C8, Aqueous C18, Biphenyl, Aromax, IBD, PFP Propyl, Silica, Carbamate, Quat)
- Ultra II® Packing Materials
- USLC™
- UHPLC Filters (UltraLine, UltraShield)



Vials & Syringes

- Screw-Thread Headspace Vials
- Magnetic Screw-Thread Caps
- Interlock Vials
- Easy Grip Manual Crimper & Decappers



HPLC Accessories

- Bio-Safe Column System
- Ferrules for SeCure-Fit
- UHP Pulse Dampener
- In-Line Check Valves for HPLC
- Waste Overflow Indicator for GL-45 Bottles
- Opti-Cap® Adapters

Instrument Replacement Parts

- for Agilent HPLC Systems
 - Active Inlet Cartridge
 - Solvent Inlet Filter
 - Stator Face Assembly
- for PerkinElmer HPLC Systems
 - Standard Pump Seal Kit
- for Shimadzu HPLC Systems
 - Inlet Check Valve
 - Outlet Check Valve
- for Waters HPLC Systems
 - Preventive Maintenance Kit
 - Hea Plunger Seal
 - Wash Seal



Reference Standards

- QueChERS Standards
- D3606 Standards
- USP Limit of Diethylene and Ethylene Glycol Standards
- EP 2.4.22 FAMES Mixes
- N.J.DEP EPH 10/08 Revision 2 Standards
- NEW column test mixes
- Melamine Standards
- PIANO & PONA VI Standards for DHA Analysis



Pipette Tips



Centrifuge Tubes



Microcentrifuge Tubes



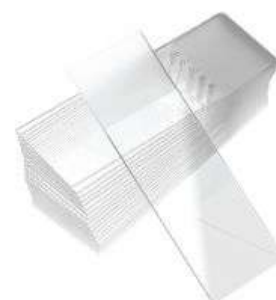
Transfer Pipette



Inoculating Loop and Needle



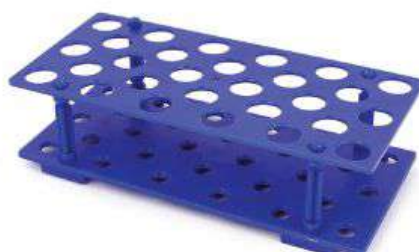
Cell Culture Consumable



Microscope Slides



Serological Pipette



PP Centrifuge Racks



Test Tubes

Syringe Filter



Membrane Solutions

PES	Inherently hydrophilic, low protein binding
MCE	High porosity, Biologically inert with good thermal stability
Nylon	Hydrophilic, high strength and heat resistance, consistency
PVDF	Wide chemical compatibility, Excellent mechanical properties
Hydrophobic PTFE	Broad chemical compatibility, strong chemical stability
Hydrophilic PTFE	Hydrophilic, Broad chemical compatibility, low extraction
PP	Hydrophobic, Highly porous membrane, Wide chemical compatibility
CA	Naturally hydrophilic, low protein binding, uniform pore size structure
GF	Excellent compatibility, High dirt-holding capacity
PC	Precise pore sizes and pore distribution, Excellent chemical resistance and thermal resistance and thermal stability



PHOTRON PTY. LTD.
SPECIALISTS IN LIGHT SOURCES

For direct use in AAS systems manufactured by :

Perkin Elmer, GBC Scientific, Analytik Jena,
Shimadzu, Hitachi, Thermo, Varian, Agilent

And all other makers.



51 mm or 2.0" Diameter



Super Lamps HCL or EDL



37 mm or 1.5" Diameter



Graphite Tube for
Atomic Absorption Spectroscopy

Basic Equipment



Water Purification



Laboratory Fume Hood



Homogenizer



Solvent & Reagents



Micro Pipette



Balance



Graphite Heating Block



**LAB
EXPERT**